



Wireless Access Point

EW-7206APg / EW-7206PDg / EW-7209APg

Quick Installation Guide (Q.I.G.)

Version 2.0 / October 2006

Multi-Language QIG on the CD

Český: Českého průvodce rychlou instalací naleznete na přiloženém CD s ovladači

Deutsch: Finden Sie bitte das deutsche S.A.L. beiliegend in der Treiber CD

Español: Incluido en el CD el G.R.I. en Español.

Français: Veuillez trouver l'français G.I.R ci-joint dans le CD

Italiano: Incluso nel CD il Q.I.G. in Italiano.

Magyar: A magyar telepítési útmutató megtalálható a mellékelt CD-n

Nederlands: De nederlandse Q.I.G. treft u aan op de bijgesloten CD

Polski: Skrócona instrukcja instalacji w języku polskim znajduje się na załączonej płycie CD

Português: Incluído no CD o G.I.R. em Portugues

Русский: Найдите Q.I.G. на русском языке на приложенном CD

Türkçe: Ürün ile beraber gelen CD içinde Türkçe Hızlı Kurulum Kılavuzu'nu bulabilirsiniz



Copyright© by Edimax Technology Co, LTD. all rights reserved. No part of this publication may be reproduced, transmitted, transcribed, stored in a retrieval system, or translated into any language or computer language, in any form or by any means, electronic, mechanical, magnetic, optical, chemical, manual or otherwise, without the prior written permission of this company

This company makes no representations or warranties, either expressed or implied, with respect to the contents hereof and specifically disclaims any warranties, merchantability or fitness for any particular purpose. Any software described in this manual is sold or licensed "as is". Should the programs prove defective following their purchase, the buyer (and not this company, its distributor, or its dealer) assumes the entire cost of all necessary servicing, repair, and any incidental or consequential damages resulting from any defect in the software. Further, this company reserves the right to revise this publication and to make changes from time to time in the contents hereof without obligation to notify any person of such revision or changes.

All brand and product names mentioned in this manual are trademarks and/or registered trademarks of their respective holders.

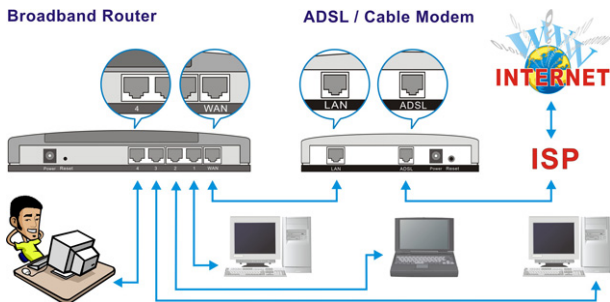
Linux Open Source Code

Certain Edimax products include software code developed by third parties, including software code subject to the GNU General Public License ("GPL") or GNU Lesser General Public License ("LGPL"). Please see the **GNU** (www.gnu.org) and **LPGL** (www.gnu.org) Web sites to view the terms of each license.

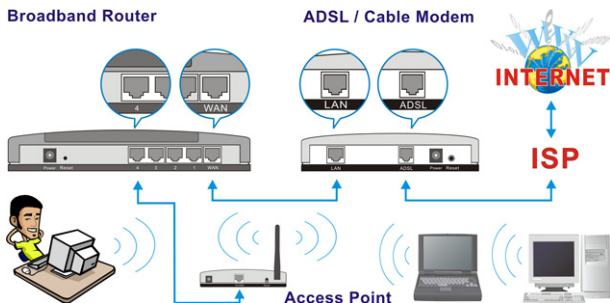
The GPL Code and LGPL Code used in Edimax products are distributed without any warranty and are subject to the copyrights of their authors. For details, see the GPL Code and LGPL Code licenses. You can download the firmware-files at <http://www.edimax.com.tw> under "Download" page.

Getting Started

Before deploying the Access Point, please make sure all the PCs in your wired network are able to obtain an IP address automatically from the router like the figure below.



After the Access Point is deployed, you can surf the Internet / Intranet wirelessly as show in the figure below.

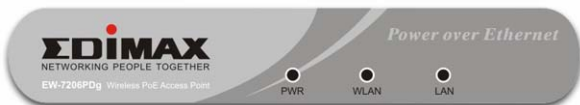


Physical Description

Front Panel

The LED lights located on the Access Point's front panel provide information of the Access Point's current status.

EW-7206APg



EW-7206PDg



EW-7209APg



LED	Color	Status	Description
PWR (Power)	Green	Lit	Power is supplied.
		Off	No Power.
WLAN (Wireless LAN)	Green	Flash	Antenna is transmitting or receiving data.
	Orange (EW-7209APg)	Off	Antenna is not transmitting or receiving data.
LAN (Link / Act)	Green	On	A valid link is established.
		Flash	It is transmitting or receiving data.
		Off	No link is established.


Back Panel



EW-7206APg / EW-7206PDg



EW-7209APg

- **Antenna Connector** 
This is where you connect the antenna. It is a round connector (standard Reverse SMA).
- **12 VDC**
This is where you connect the power adapter.
- **Reset**
The reset button has two functions.
 1. If you want to reboot the Access Point, use a pencil tip to press the reset button no more than 4 seconds.
 2. If you press and hold the reset button for more than 4 seconds, the Access Point will reset to the factory defaults (Warning: Your settings will be deleted and replaced with the factory default settings).
- **10/100M** (EW-7206APg / EW-7206PDg)
This LAN port is where you connect the Access Point to your Ethernet devices (switch or router).
- **1. 2. 3. 4. 5.** (EW-7209APg)
These LAN ports are where you connect the Access Point to your Ethernet devices (switches or routers) or to computers.

Wireless LAN Access Point Configuration

To configure the other advanced settings of this Access Point with advanced setting such as data encryption, please follow the procedures to login the Access Point's setup page.

To configure the more advanced settings from this Access Point, such as data-encryption, please follow the procedure to login the Access Point's setup page.

The IP address of the Access Point is **192.168.2.1**

First, assign an IP Address to the PC

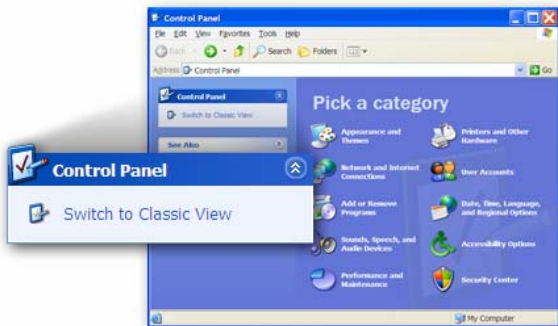
Before assigning an IP address to the PC, please connect a network cable from the LAN port of the PC to the LAN port of the Access Point as show below.



1. Click **"Start"** on the task bar then select the **"Control Panel"** to open it.



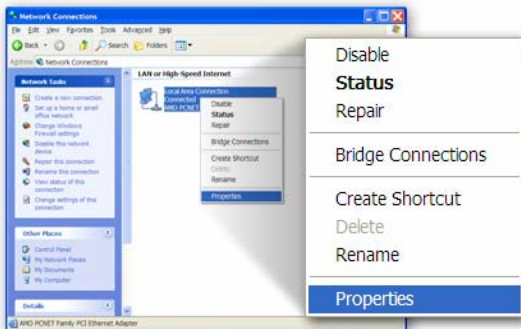
2. Click **“Switch to Classic View”** on the top left corner to see more setting icons...



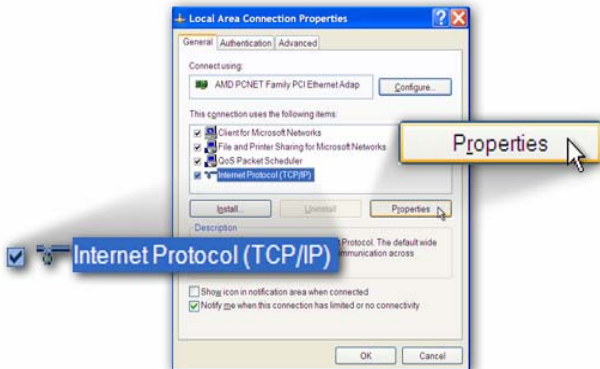
3. Find the **“Network Connection”** icon then Double-Click to open the network connection settings.



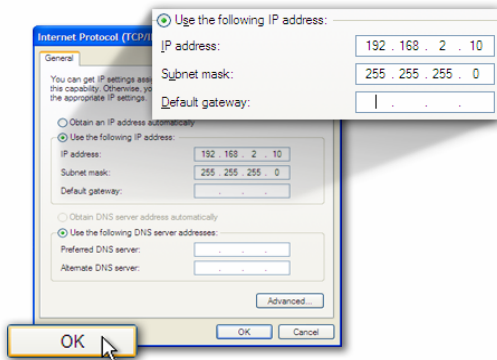
4. You will see the “**Local Area Connection**” icon, click the icon to highlight it, then Right-Click the mouse to open the sub-menu and select the “**Properties**” to setup the IP address.



- Click and highlight the “**Internet Protocol (TCP/IP)**”, then click the “**Properties**”

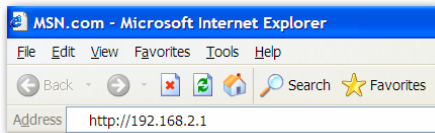


- Select **“Use the following IP address”**. Enter a fixed IP address, for example **“192.168.2.10”**, with a subnet mask of **“255.255.255.0”** and leave **“Default gateway”**, **“Preferred DNS server”** and **“Alternate DNS server”** blank then press **“OK”** to close.



Second, login to the Access Point with a Web Browser

1. Open up web browser and type in **192.168.2.1** (Access Point default IP address) to access the Access Point's setup page.



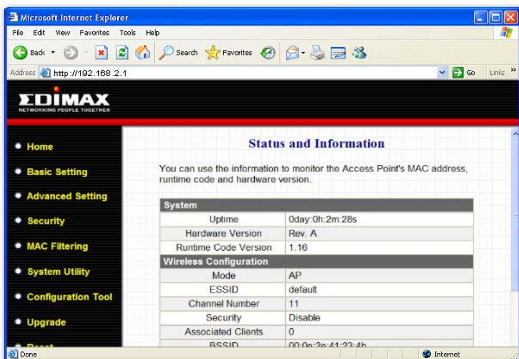
2. A screen requesting user name and password, shown on next page, will appear. The default user name and password are:

User Name: admin / Password: 1234

Note: It's highly recommended to change the login settings and keep it for future reference.

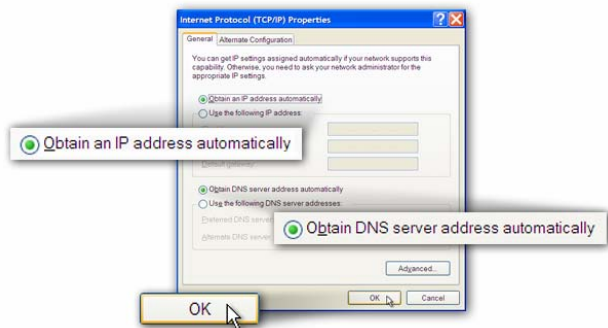


3. Enter the default user name and password, then press OK button. You can start configuring the Access Point now.



Note: If this Access Point will be connected to a router, please first find out the DHCP/IP address setting of the router and setup a suitable IP address to the Access Point. Check the manual on the CD for more setting details.

4. After the configuration is done, please change your PC's IP address back to original setting either **"Obtain an IP address automatically"** / **"Obtain DNS server address automatically"** or **"Using the following IP address"** / **"Use the following DNS server addresses"**. Press **"OK"** to close.

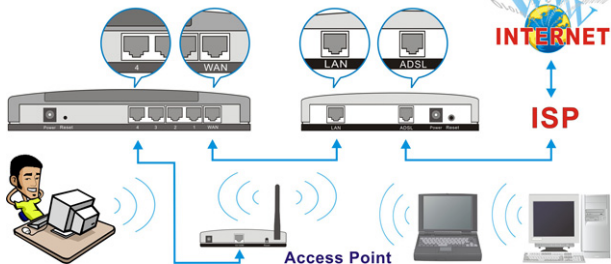


Finally, connect the Access Point to your router or switch.

Now you can use the wireless card in your PC to connect to the Internet / Intranet wirelessly as shown below:

Broadband Router

ADSL / Cable Modem



Federal Communication Commission Interference Statement

This equipment has been tested and found to comply with the limits for a Class B digital device, pursuant to Part 15 of FCC Rules. These limits are designed to provide reasonable protection against harmful interference in a residential installation. This equipment generates, uses, and can radiate radio frequency energy and, if not installed and used in accordance with the instructions, may cause harmful interference to radio communications.

However, there is no guarantee that interference will not occur in a particular installation. If this equipment does cause harmful interference to radio or television reception, which can be determined by turning the equipment off and on, the user is encouraged to try to correct the interference by one or more of the following measures:

1. Reorient or relocate the receiving antenna.
2. Increase the separation between the equipment and receiver.
3. Connect the equipment into an outlet on a circuit different from that to which the receiver is connected.
4. Consult the dealer or an experienced radio technician for help.

FCC Caution

This device and its antenna must not be co-located or operating in conjunction with any other antenna or transmitter.

This device complies with Part 15 of the FCC Rules. Operation is subject to the following two conditions: (1) this device may not cause harmful interference, and (2) this device must accept any interference received, including interference that may cause undesired operation.

Any changes or modifications not expressly approved by the party responsible for compliance could void the authority to operate equipment.

Federal Communications Commission (FCC) Radiation Exposure Statement

This equipment complies with FCC radiation exposure set forth for an uncontrolled environment. In order to avoid the possibility of exceeding the FCC radio frequency exposure limits, human proximity to the antenna shall not be less than 2.5cm (1 inch) during normal operation.

Federal Communications Commission (FCC) RF Exposure Requirements SAR compliance has been established in the laptop computer(s) configurations with PCMCIA slot on the side near the center, as tested in the application for Certification, and can be used in laptop computer(s) with substantially similar physical dimensions, construction, and electrical and RF characteristics. Use in other devices such as PDAs or lappads is not authorized.

This transmitter is restricted for use with the specific antenna(s) tested in the application for Certification. The antenna(s) used for this transmitter must not be co-located or operating in conjunction with any other antenna or transmitter.

R&TTE Compliance Statement

This equipment complies with all the requirements of DIRECTIVE 1999/5/EC OF THE EUROPEAN PARLIAMENT AND THE COUNCIL of March 9, 1999 on radio equipment and telecommunication terminal Equipment and the mutual recognition of their conformity (R&TTE) The R&TTE Directive repeals and replaces in the directive 98/13/EEC (Telecommunications Terminal Equipment and Satellite Earth Station Equipment) As of April 8, 2000.

Safety

This equipment is designed with the utmost care for the safety of those who install and use it. However, special attention must be paid to the dangers of electric shock and static electricity when working with electrical equipment. All guidelines of this and of the computer manufacture must therefore be allowed at all times to ensure the safe use of the equipment.

EU Countries Intended for Use

The ETSI version of this device is intended for home and office use in Austria, Belgium, Denmark, Finland, France, Germany, Greece, Ireland, Italy, Luxembourg, the Netherlands, Portugal, Spain, Sweden, and the United Kingdom.

The ETSI version of this device is also authorized for use in EFTA member states: Iceland, Liechtenstein, Norway, and Switzerland.

EU Countries Not Intended For Use

None.



