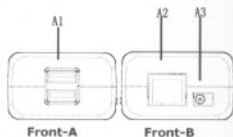


Description

Features:

- ⊙Support 10/100 M/bps
- ⊙Support Windows/Linux
- ⊙Support Protocol : TCP/IP, HTTP
- ⊙Chipset : RDC
- ⊙Support Data Format : FAT32, EXT2, EXT3
- ⊙Support Function: FTP/DHCP /SAMBA / UPnP Media server/ PRINTER SERVER
- ⊙Support BT download management
- ⊙Included Disk Utility: Format Disk, Scan Disk, and Disk hibernation mode.
- ⊙Support Administration Password control.
- ⊙Support USB external HDD and Printers
- ⊙Power Adapter: Input:AC:100~240V 50/60Hz, 0.3A Output:DC 5V/2A

--- Front Panel ---



- A1) 2 x USB 2.0
- A2) LAN Port (connect to your router)
- A3) AC Power Plug (AC 110~240V 50/60Hz, DC 5V, 2A only)

--- Rear View ---



- B1) LED power indicator
- B2) Device RESET switch

Package Contents:

- 1 x GearBox NAS Adaptor
- 1 x USB Data cable
- 1 x USB Printer cable
- 1 x RJ45 Network Cable
- 1 x AC Adapter
- 1 x Installation CD include disk search utility and manual

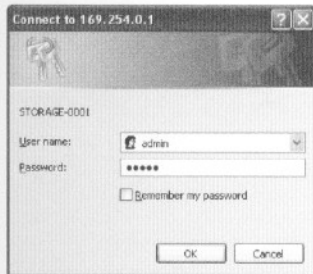
1. Getting Started

To access your GearBox, please insert the CD and run "Search Disk" Utility. Note: JRE(Java Runtime Environment) must be installed on the PC. If you do not have JRE installed, please download from <http://www.java.com>

Execute "Search Disk" Utility and click on "Search Next".



"IP" should be filled automatically if **your network has DHCP server**: Gearbox should be assigned with an IP address by the router. If your network **does not have DHCP server**, GearBox becomes a DHCP server itself. Storage **default IP is 169.254.0.1**. As soon as you click on "Connect" you will be prompt with a window's log in screen. Enter the Default user name and password and proceed to the WEB UI



Default user name: **admin**

Default password: **admin**