



MODEL(型号/型号):  
DPS-310AB-3 A

REV(版本/版本):0B  
HP P/N: L08262-003

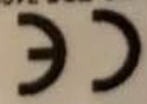
INPUT(输入/输入):  
100-240V- / 3.8A, 50-60Hz

OUTPUT(输出/输出):  
+12.1VMAN == 16A  
+12.1VCPU == 16A

MAX POWER 310W  
最大输出/最大输出 310W

High Efficiency

RoHS



HP, HQ-TR, 71025  
Boeblingen, Germany



R33030  
RoHS



CT: 5GWZG00B4DBDANO



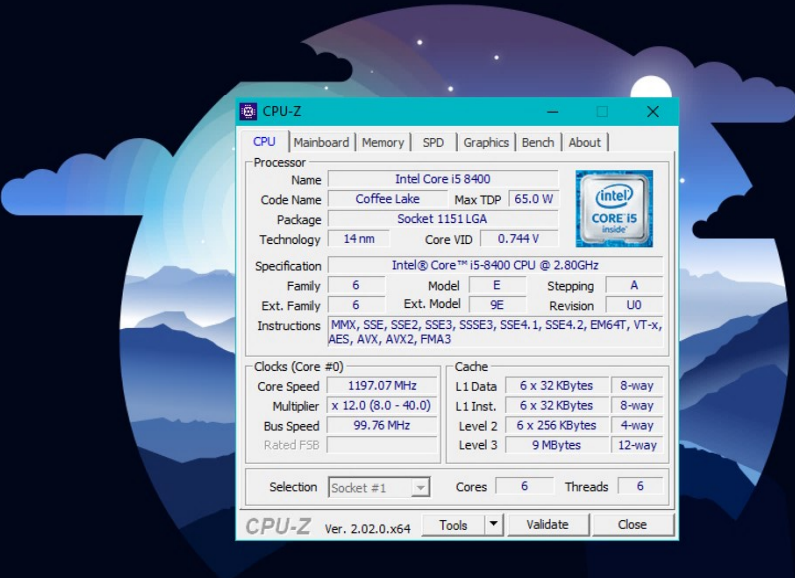
인허가번호: 17051  
ZU10129-DVP-DPS-310AB-1A  
MSP-REM-DVP-DPS-310AB-1A  
Mfr. Name: Delta Electronics Power  
(Dongguan) Co., Ltd  
A/S Center: 1588-3003



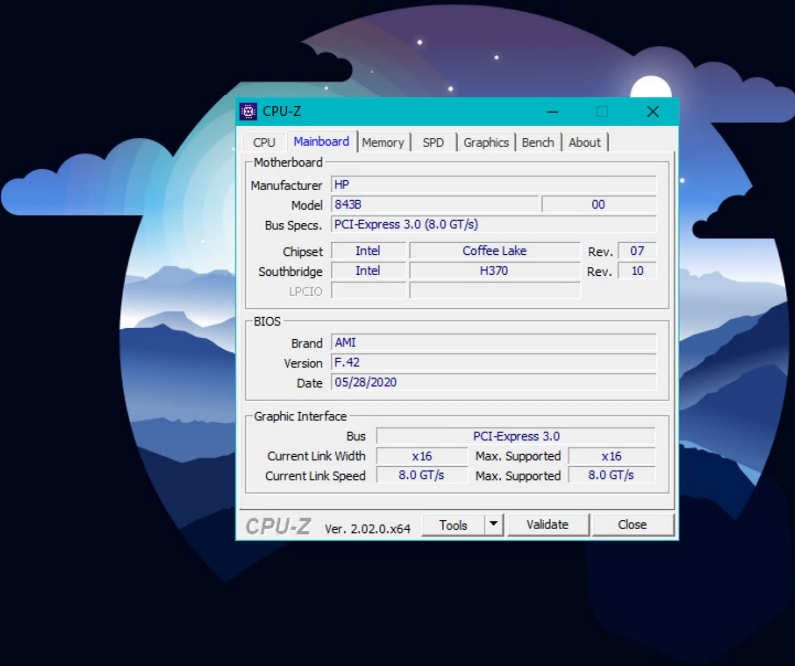
Type Approved  
Safety  
Regular Production  
Surveillance  
www.tuv.com  
ID: 1419039130

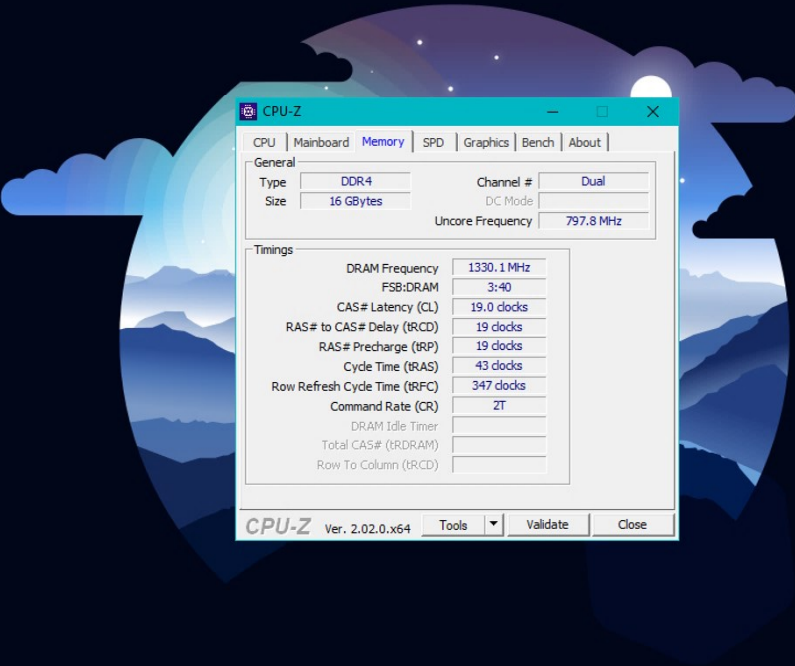
HAZARDOUS AREA  
WARNING!  
No workable components inside.  
ATTENTION! ZONE DANGEREUSE  
Ne travaillez pas sur composants qui peuvent être endommagés par l'intérieur ou par la surface.  
VOHSICHT! GEFAHR ZONE  
Diese Ausrüstung enthält keine für Personen gefährlichen elektrischen Ladungen.  
ATTENTION! ZONA PERICOLOSA  
Non tentare di riparare né componenti né circuiti.  
PRECAUCION! AREA PELIGROSA  
No intente reparar ni componentes ni circuitos.  
ATENCIÓN!  
Esta unidad no tiene ningún componente ni circuito que pueda ser peligroso para el usuario.  
DELTA ELECTRONICS, INC.

SWITCHING POWER SUPPLY  
开关电源 / 交流电源转换器  
MADE IN CHINA / DCS  
制造地: 中国 / 制造地: 中国  
10  
CONT O.K.  
HIPOT O.K.  
B1 O.K.  
ATE O.K.



CPU		Mainboard	Memory	SPD	Graphics	Bench	About
<b>Processor</b>							
Name	Intel Core i5 8400						
Code Name	Coffee Lake	Max TDP	65.0 W				
Package	Socket 1151 LGA						
Technology	14 nm	Core VID	0.744 V				
<b>Specification</b> Intel® Core™ i5-8400 CPU @ 2.80GHz							
Family	6	Model	E	Stepping	A		
Ext. Family	6	Ext. Model	9E	Revision	U0		
Instructions	MMX, SSE, SSE2, SSE3, SSSE3, SSE4.1, SSE4.2, EM64T, VT-x, AES, AVX, AVX2, FMA3						
<b>Clocks (Core #0)</b>							
Core Speed	1197.07 MHz						
Multiplier	x 12.0 (8.0 - 40.0)						
Bus Speed	99.76 MHz						
Rated FSB							
<b>Cache</b>							
L1 Data	6 x 32 KBytes	8-way					
L1 Inst.	6 x 32 KBytes	8-way					
Level 2	6 x 256 KBytes	4-way					
Level 3	9 MBytes	12-way					
Selection	Socket #1	Cores	6	Threads	6		
<b>CPU-Z</b> Ver. 2.02.0.x64 <b>Tools</b> <b>Validate</b> <b>Close</b>							

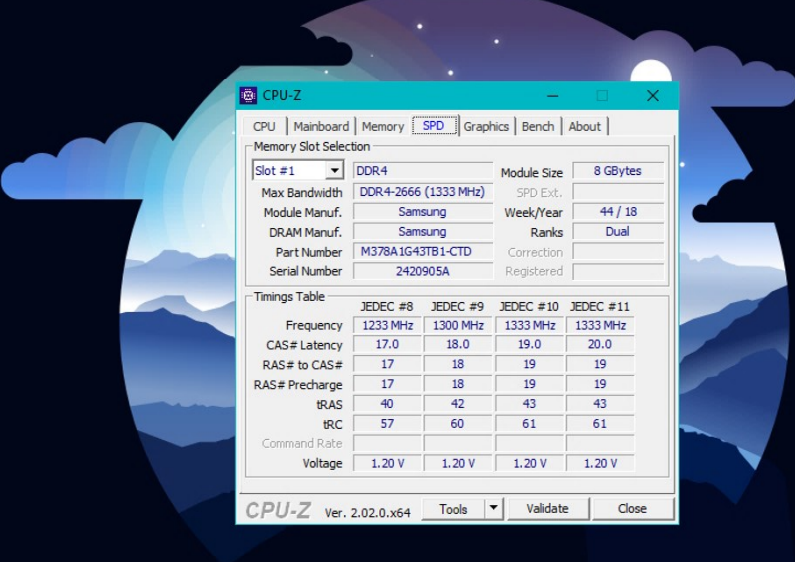




General	
Type	DDR4
Size	16 GBytes
Channel #	Dual
DC Mode	
Uncore Frequency	797.8 MHz

Timings	
DRAM Frequency	1330.1 MHz
FSB:DRAM	3:40
CAS# Latency (CL)	19.0 clocks
RAS# to CAS# Delay (tRCD)	19 clocks
RAS# Precharge (tRP)	19 clocks
Cycle Time (tRAS)	43 clocks
Row Refresh Cycle Time (tRFC)	347 clocks
Command Rate (CR)	2T
DRAM Idle Timer	
Total CAS# (tRDRAM)	
Row To Column (tRCD)	



CPU-Z

CPU | Mainboard | Memory | SPD | Graphics | Bench | About

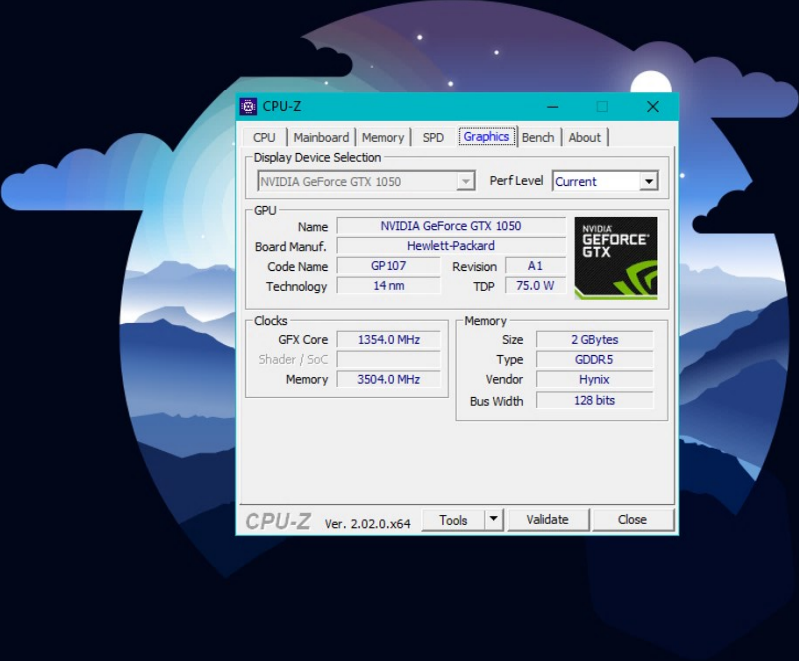
Memory Slot Selection

Slot #1	DDR4	Module Size	8 GBytes
Max Bandwidth	DDR4-2666 (1333 MHz)	SPD Ext.	
Module Manuf.	Samsung	Week/Year	44 / 18
DRAM Manuf.	Samsung	Ranks	Dual
Part Number	M378A1G43TB1-CTD	Correction	
Serial Number	2420905A	Registered	

Timings Table

	JEDEC #8	JEDEC #9	JEDEC #10	JEDEC #11
Frequency	1233 MHz	1300 MHz	1333 MHz	1333 MHz
CAS# Latency	17.0	18.0	19.0	20.0
RAS# to CAS#	17	18	19	19
RAS# Precharge	17	18	19	19
tRAS	40	42	43	43
tRC	57	60	61	61
Command Rate				
Voltage	1.20 V	1.20 V	1.20 V	1.20 V

CPU-Z Ver. 2.02.0.x64 Tools Validate Close



GPU			
Name	NVIDIA GeForce GTX 1050		
Board Manuf.	Hewlett-Packard		
Code Name	GP107	Revision	A1
Technology	14 nm	TDP	75.0 W

Clocks		Memory	
GFX Core	1354.0 MHz	Size	2 GBytes
Shader / SoC		Type	GDDR5
Memory	3504.0 MHz	Vendor	Hynix
		Bus Width	128 bits